



San Pablo Park 5-12 PS

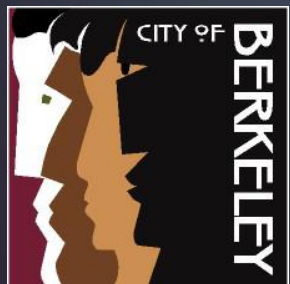


Berkeley Tuolumne Camp



South Cove

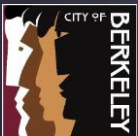
# Parks, Recreation & Waterfront Capital Improvement Projects



**Parks  
Make  
Life  
Better!**

# Summary of Presentation

- ▶ Unfunded Projects
- ▶ Highest Need Projects
- ▶ Completed Construction Projects in FY20 and FY21
- ▶ Completed Planning Projects
- ▶ Projects in Construction
- ▶ Projects Bidding
- ▶ Funded Projects in Design
- ▶ Future Funded Projects
- ▶ Current Grant Applications





# Unfunded Projects -182M

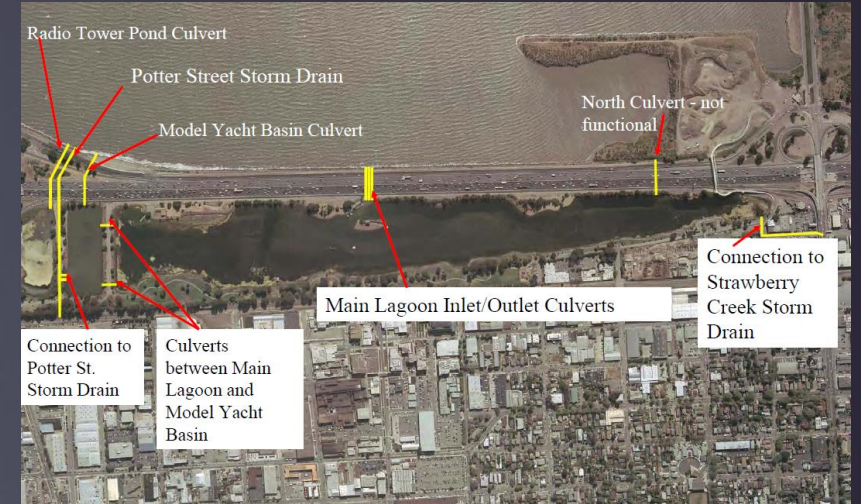
## ▶ Current Unfunded Need

Waterfront \$113M

Parks \$55.6M

Camps \$5.9M

Pools \$7.5M



## ▶ Making Progress...

▶ Reduced From \$220M in 2016

T1 Phase 1 and 2

Measure F (**Parks Tax**)

Grants



# Highest Need Unfunded Projects: Camps and Pools

West Campus Pool

Tile, Plaster **\$300K**

Filter Replacement **\$160K**

Echo Lake ADA

Phase 1: **\$705K**

Phase 2: \$1.3M

FY21 deffered GF Capital

\$2.2M

Need **\$1.165M** in FY22



West Campus Pool  
Filter



Echo Lake  
Camp



# Highest Need Waterfront Projects

5

- ▶ Dock Replacement (J, L, M, N) \$32M
- ▶ Dredging in Main Channel and South Cove \$8.5M



Dock



South Cove by West Dock



# Decaying Infrastructure - Waterfront



Misc finger dock



Docks



Aged Sheet Pile Wall -  
South Cove



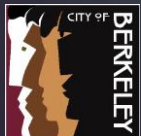
Decaying Timber Piles



Low lying Area - Marina Blvd

# Construction Projects Completed last 18 months

- ▶ Aquatic Park – South Pathway (**Parks Tax/ Bayer**)
- ▶ Aquatic Park – Tide Tube Clean Out (**T1**)
- ▶ George Florence 2-5, 5-12 Play structures (**T1**)
- ▶ James Kenney 2-5, 5-12 Play structures (**Grant/ Parks Tax**)
- ▶ John Hinkel Upper Picnic Area and ADA (**Grant/Parks Tax/ Insurance**)
- ▶ Live Oak Community Center (**T1/Parks Tax**)
- ▶ Strawberry Creek Park 2-12 Play Area (**T1/ Parks Tax**)
- ▶ Strawberry Creek Park Restroom (**T1**)
- ▶ Waterfront – Dock O, LM, DE, FGHI (4) Restroom Remodels (**GF**)
- ▶ Waterfront – South Cove Bay Trail, Docks and ADA (**3 grants/Marina Fund**)
- ▶ Waterfront – Finger Dock Replacement Phase 1 and 2 (**GF/Marina Fund**)





# Completed Construction

- ▶ Strawberry Creek Park Play Area
- ▶ South Cove Docks, Bay Trail and ADA Gangway
- ▶ John Hinkel Park Upper Picnic Area



Strawberry Creek Park



Bay Trail – South Cove



John Hinkel Picnic Area

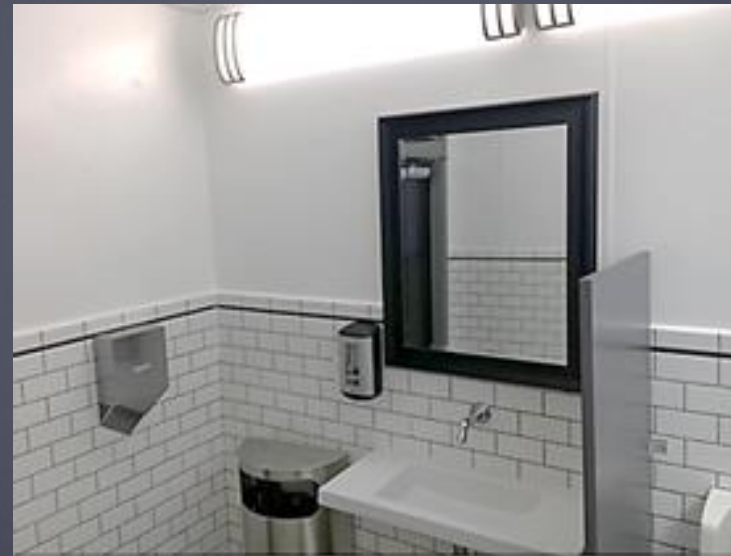


# Completed Construction

- ▶ Aquatic Park – Tide Tube Clean Out
- ▶ Marina – Slip Holder Restrooms (4)
- ▶ George Florence Park – 2-5 and 5-12 Play Structures



Tide Tube Clean Out



Marina Restrooms



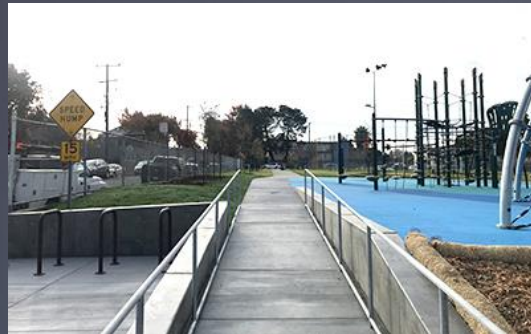
George Florence Park

# Completed Construction

- ▶ James Kenney Playground
- ▶ Pathway of South Aquatic Park



James Kenney Park Playground



South Aquatic Park – Pathway



# Completed Construction

- ▶ Strawberry Creek Restroom
- ▶ Live Oak Community Center



Strawberry Creek Restrooms



Live Oak Community Center

# “Planning Only” Projects Completed last 18 months

12

- ▶ City Wide Restroom Study **(T1)**
- ▶ Echo Lake ADA – Phase 1 Design complete/ Phase 2 Conceptual Design **(GF)**
- ▶ Frances Albrier Community Center with Pool Conceptual Design **(T1)**
- ▶ Tom Bates Sports Complex: Field House/ Restroom – Conceptual Design **(T1)**
- ▶ Waterfront- Sea Level Rise Study **(T1)**
- ▶ Willard Clubhouse Replacement- Conceptual Design **(T1)**



# Planning Projects



Willard Clubhouse



Tom Bates Community Space & Restroom



Option A - Shed Roof



Option B - Gable Roof



Aerial view of massing option

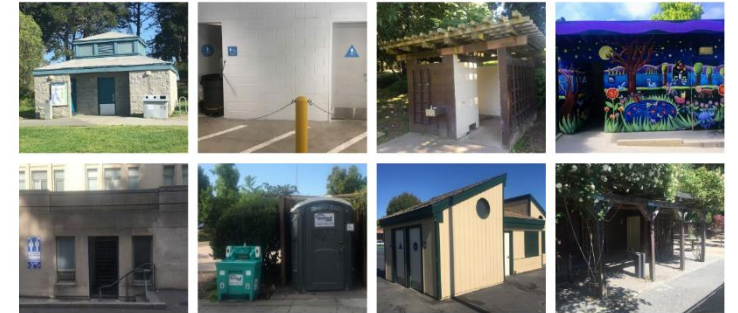


View from playground

Frances Albrier Community Center

## BERKELEY WASH ASSESSMENT

### SITE VISITS SUMMARY



HYPHAE DESIGN LABORATORY, 2020

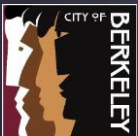


Citywide Restroom Study

# Construction in Progress

14

- ▶ Berkeley Tuolumne Camp (**Insurance/ FEMA Grant/GF**)
- ▶ Rose Garden Pergola, Pathways and Tennis courts (**T1/ Parks Tax**)
- ▶ San Pablo Park 2-5, 5-12 Play Structures (**T1/ Parks Tax**)
- ▶ San Pablo Tennis Courts (**T1/ Parks Tax**)
- ▶ Waterfront Corp Yard Electrical and Beam Replacement (**T1**)





# Construction In Progress



Berkeley Rose Garden Pergola  
Pathway & Tennis Courts

San Pablo Park Tennis Court Bleachers &  
Playground

Waterfront Corp Yard  
Beam Replacement & Electrical



# Construction In Progress



BTC Staff Cabins



BTC Rec Hall



BTC Tent Cabins

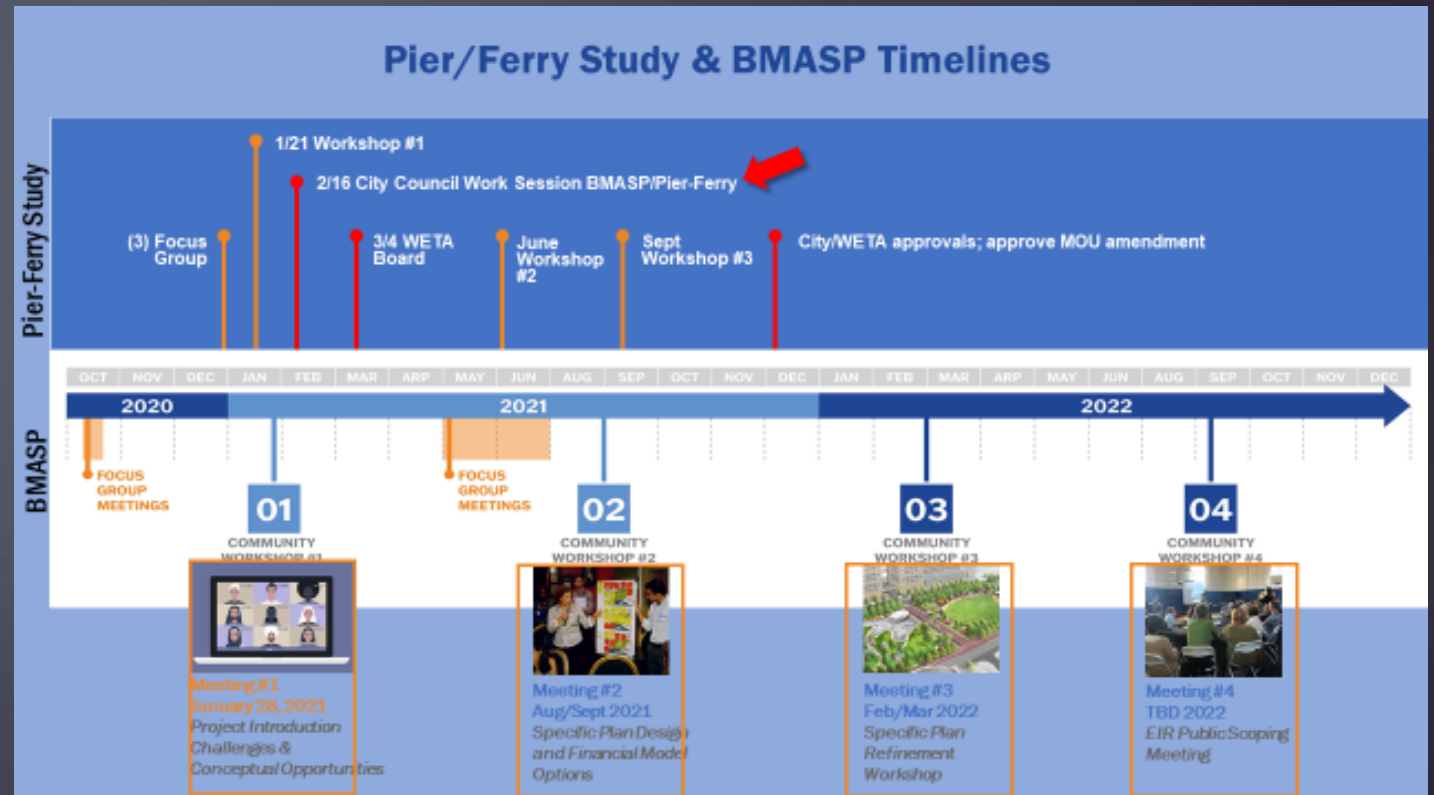


BTC South River through site



# “Planning Only” Projects in Process

- ▶ Berkeley Marina Area Specific Plan (GF)
- ▶ Municipal Pier Structural Assessment/Ferry Feasibility Study (T1/Marina Fund/WETA)



# Construction Projects Bidding Waterfront

18

- ▶ University Ave, Spinnaker Way, Marina Blvd (**T1, Streets, Double Tree**)
- ▶ Marina Bike Lockers (20) (**Grants/ GF/ Marina Fund**)
- ▶ Finger Dock Replacement- Phase 3 (**GF/ Marina Fund**)





# Construction Projects Bidding

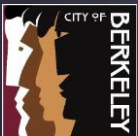
## ▶ King School Park Play Equipment



# Projects in Design

20

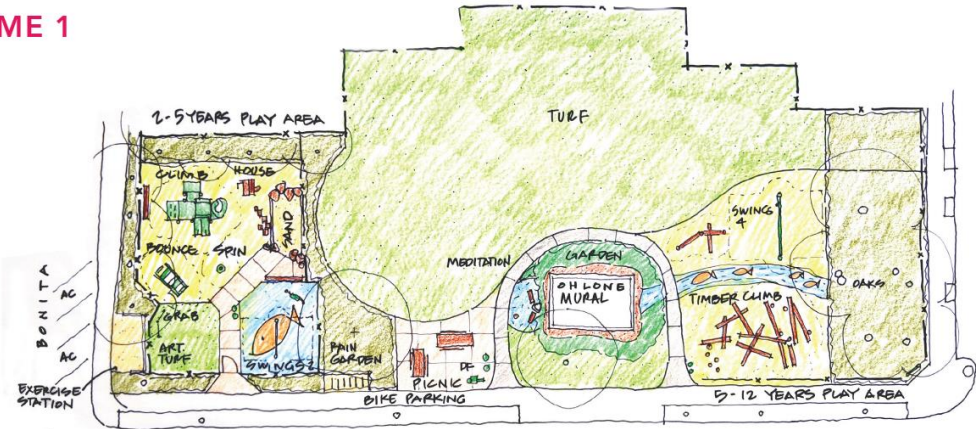
- ▶ Aquatic Park – Dock access parking and ADA: In final design (**Parks Tax/Bayer**)
- ▶ Cazadero Camp – Jensen Dormitory: In final design (**Insurance**)
- ▶ Grove Park – Sports Field Renovation (**Parks Tax/ T1**)
- ▶ John Hinkel 2-12 Amphitheatre, Picnic and Play Areas: In final design (**Parks Tax/ T1p2**)
- ▶ Ohlone Park (Milvia) 2-5 and 5-12 Play areas and Mural Garden: In conceptual design (**Parks Tax/T1p2**)
- ▶ Waterfront: Marina - Misc. Pilings Project: In final design (**T1p2/Parks Tax**)
- ▶ Waterfront: Marina Marina O & K Electrical: In final design (**GF**)



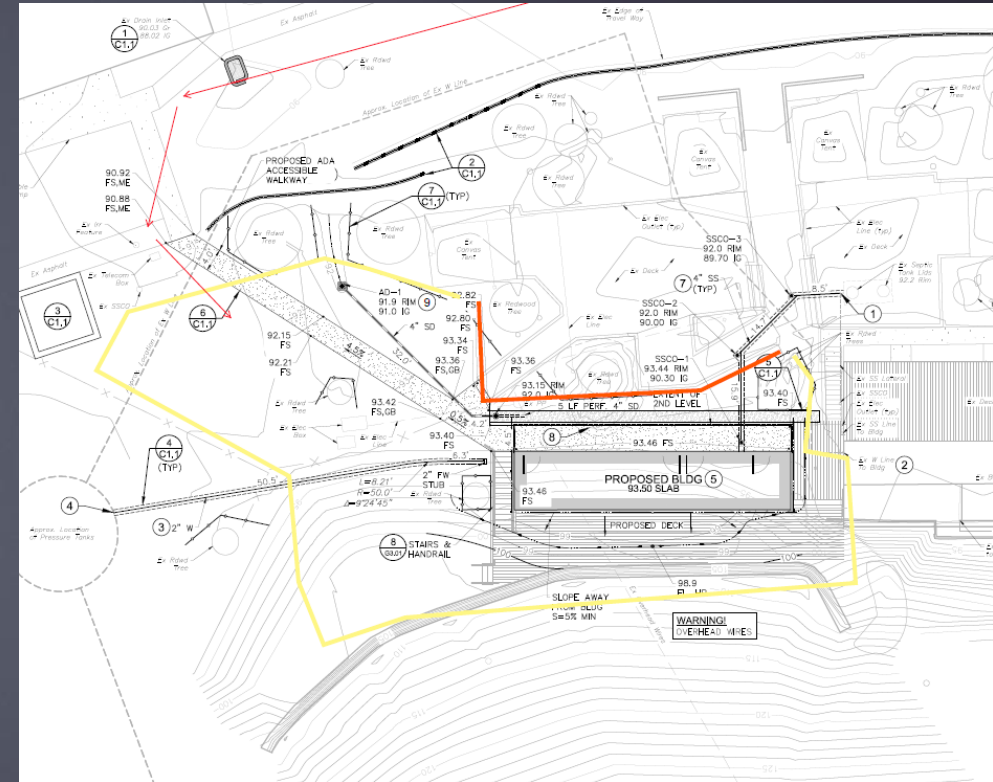
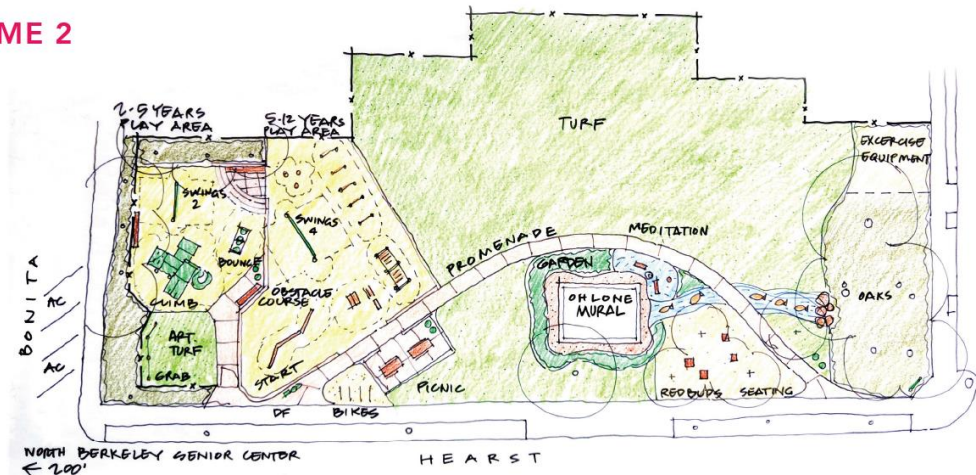


# Projects in Design

**SCHEME 1**



**SCHEME 2**



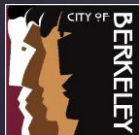
Cazadero Camp Dorm

Ohlone Park East Playground & Mural Garden Improvement

# T1 P2 Funded Projects (not started)

22

- ▶ **Parks** – MLK Jr. Youth Services Center Renovation
- ▶ **Parks** – Willard Clubhouse and Restroom Replacement
- ▶ **Citywide** – African American Holistic Resource Center (new)
- ▶ **Parks** – Tom Bates Restroom and Community Space (new)
- ▶ **Parks** – Harrison Park Restroom Renovation
- ▶ **Parks** – Ohlone Park – Restroom (new)
- ▶ **Parks** – Ohlone Park Lighting
- ▶ **Parks** – Grove Park Play ages 2-5 & 5-12 Structures
- ▶ **Parks** – Aquatic Park Tide Tubes Clean Out: Soil Removal
- ▶ **Parks** – Civic Center Park – Turtle Garden
- ▶ **Pools** – King Pool Tile and Plaster Replacement
- ▶ **Camps** – Cazadero Camp Dining Hall Renovation & ADA Improvements
- ▶ **Waterfront** – K Dock Public Restroom Renovation
- ▶ **Waterfront** – Cesar Chavez Park – Public Restroom (new)
- ▶ **Waterfront** – D & E Dock Replacement (**T1/DBAW Loan**)





# Grants in Process

- ▶ Grove Park Play Structure (**Prop 68**)
- ▶ Santa Fe ROW: Blake – Parker – New Park (**Prop 68**)
- ▶ Aquatic Park: (**AA**)
- ▶ MLK Junior Youth Services Center –Seismic (**FEMA**)
- ▶ Tree planting – West Berkeley (**EEMP**)



Santa Fe Right-of-Way  
Conceptual Design

Thank you.

Questions?